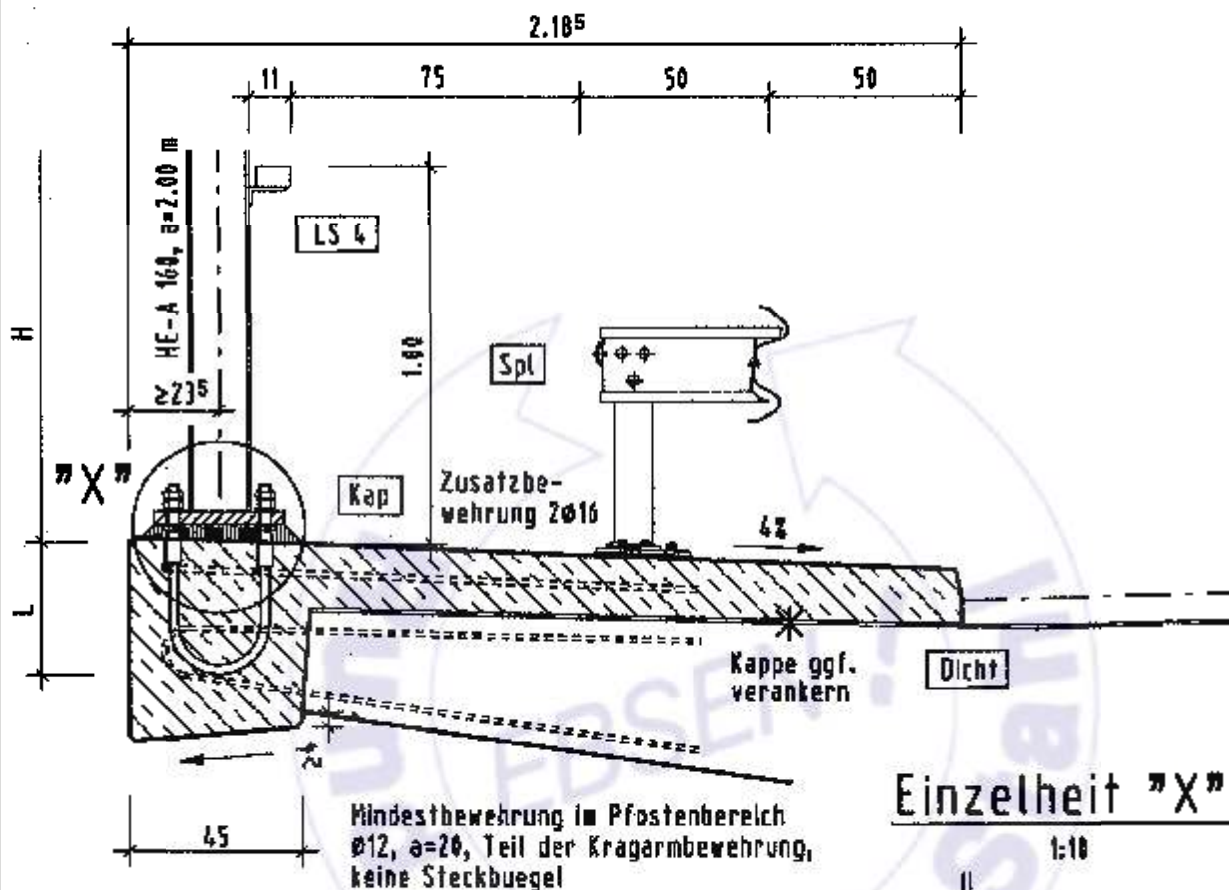


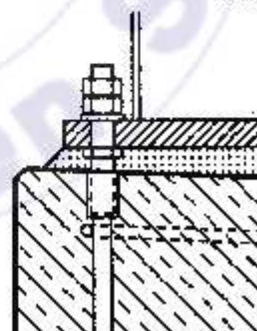
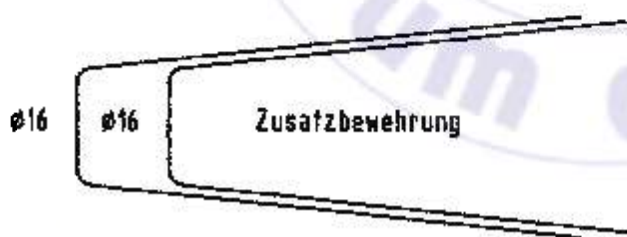
Querschnitt

1:20



Einzelheit "X"

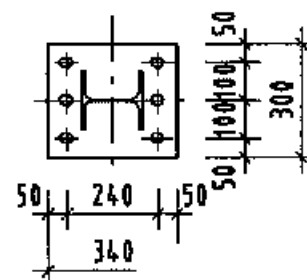
1:10



- Konter- oder Sicherungsmutter nach DIN 7967
- Sechskantmutter
- Scheibe
- Stellmutter
- Gewindestange
- Gewindehülse

Fussplatte

1:20



| Mindestwerte fuer Pfostenabstand a=2.00 m | | | | | | | |
|---|----------------------------------|-----------------------------|---------------------------------|------------------|-----------------------------|---------------------------------|------------------|
| Höhe H (m) | Fussplatte S 235 JR t (mm) | Windlast w=1,45 kN/m² | | | Windlast w=1,75kN/m² | | |
| | | Bewindestangen +) Stueck | Schlaufen ØSt 500S Ø (mm) | Laenge L (mm) | Bewindestangen +) Stueck | Schlaufen ØSt 500S Ø (mm) | Laenge L (mm) |
| 2.00 | 20 | 4 M16 | 16 | 200 | 4 M20 | 20 | 200 |
| 2.50 | 20 | 4 M20 | 16 | 210 | 4 M24 | 20 | 210 |
| 3.00 | 25 | 4 M24 | 20 | 230 | 4 M27 | 20 | 270 |
| 3.50 | 30 | 4 M27 | 20 | 290 | 6 M24 | 20 | 250 |
| 4.00 | 35 | 6 M27 | 20 | 260 | 6 M30 | 20 | 310 |
| 4.50 | 35 | 6 M30 | 20 | 320 | 6 M30 | 25 | 310 |

+) Festigkeitsklasse 4.6